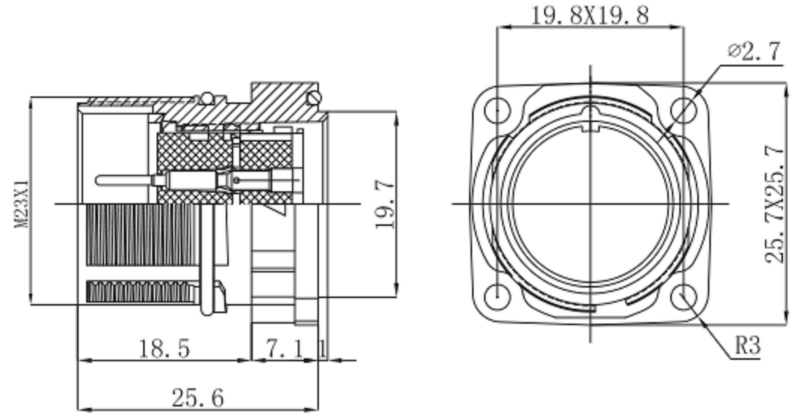
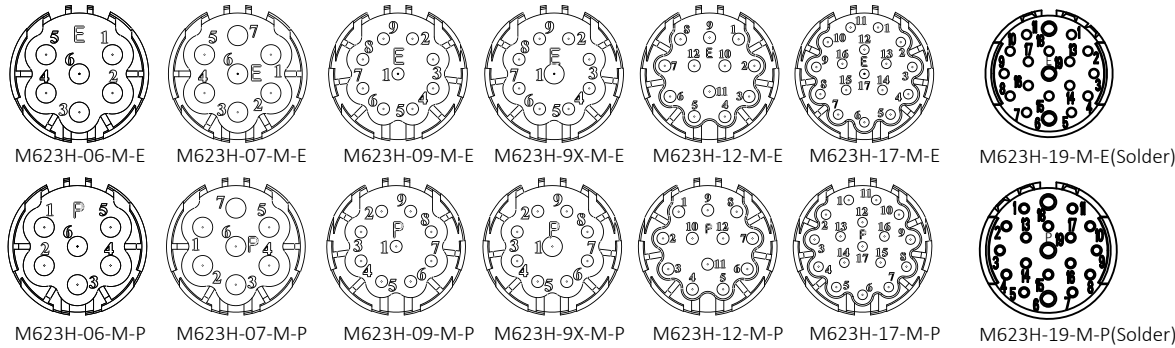


4	5	6
发行版本 Revision	修改内容 Description	制图 Drawing
A / O	First release	Ding
		日期 Date
		2023.06.02

Pin Assignment
(Front View)



Technology parameter:

P/N	M623H-06-M	M623H-07-M	M623H-09-M	M623H-9X-M	M623H-12-M	M623H-17-M	M623H-19-M
NO.of contacts	6	7	9	9X	12	17	19
Rated current/voltage	20A/300V	20A/300V	8A/300V	8A/260V 20A/300V	8A/260V	8A/260V	8A/125V 20A/200V
Operation limit voltage(AC.V.rms)	250	250	200	200	200	200	200
Withstanding voltage (AC.V.rms) 1 minute	2500	2500	2500	2500	2500	2500	2500
Insulation resistance	≥100MΩ	≥100MΩ	≥100MΩ	≥100MΩ	≥100MΩ	≥100MΩ	≥100MΩ
Contact resistance	≤5mΩ	≤5mΩ	≤5mΩ	≤5mΩ	≤5mΩ	≤5mΩ	≤5mΩ
Cup mouth aperture	∅2.4	∅2.4	∅1.3	∅1.3 ∅2.4	∅1.3	∅1.3	∅1.3
Contact diameter	∅2	∅2	∅1	∅1*8 ∅2*1	∅1	∅1	∅1*16 ∅1.5*3

Material and specifications:

1. Coupling: Threaded coupling
2. Shell material: Zinc alloy with nickelplate
3. Insert material: PA66+GF
4. Contact material: copper, gold-plated
5. Termination: Crimp(19P is Solder)
6. Mating cycle: >500 cycles
7. Temperature range: -25℃~+85℃

客户料号 Cus' P/N				图号 File No.	M623H-xx-M-E/P		品名 Name	M23 Male connector With flange,Crimp type	
未注公差 Unless Otherwise Specified				单位 Unit	mm	版本 Revision	A/O	图纸确认 APPROVAL	日期 Date
线性 Linear	0.5~6	±0.1		比例 Scale	---		绘图 Drawing	Ding	2023.06.02
	>6~30	±0.2					审核 Checked	Jim	2023.06.02
角度 Angles	±3°			页码 Page	1/1	客户确认 Customer Approved			